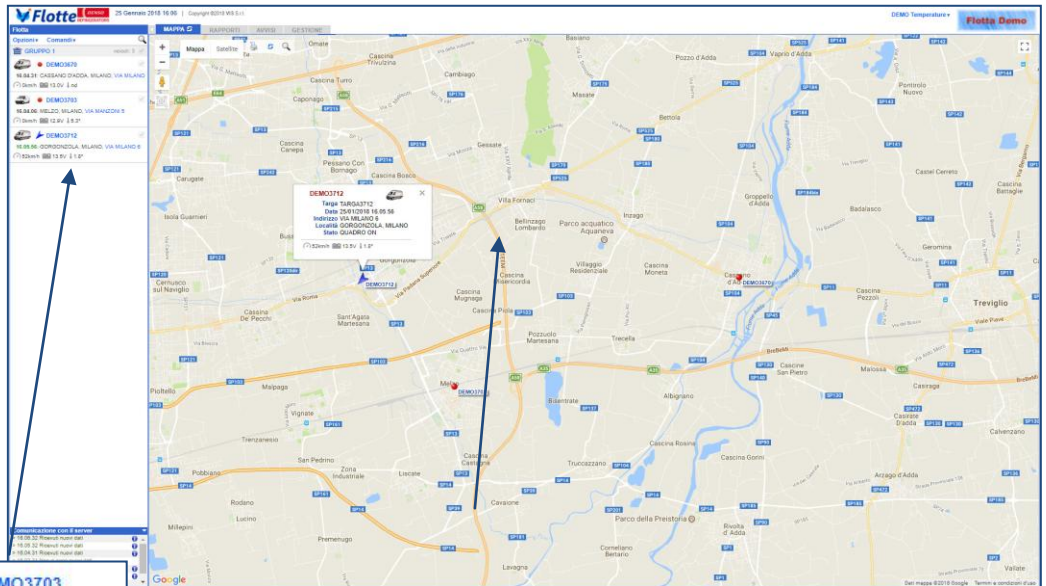




## Fleet Map

Simultaneously displays the current location of all vehicles selected. The icon shows the status of the vehicle and each vehicle is recognizable by the label with the name (customizable).



**Legenda**

Indicatori stato veicolo:

- Quadro off
- Quadro on - fermo
- Quadro on - fermo - GPRS assente.
- Quadro off - GPS assente
- Quadro on - GPS assente
- Quadro on - fermo - GPRS assente.
- ✖ Blocco avviamento attivo

chiudi

Image with exact Model and Vehicle Color

**DEMO3703**

16.04.06: MELZO, MILANO, VIA MILANO

0km/h 12.9V 5.3°

---

**DEMO3712**

16.05.56: GORGONZOLA, MILANO

52km/h 13.5V 1.8°

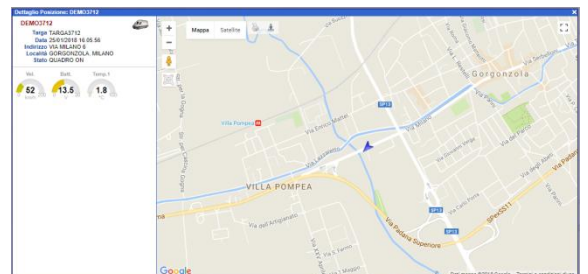
## Position Detail Map with Temperature

Just clicking on an address, or directly on the icon on the map of the vehicle fleet, a PopUp window appears with the detail map and instrument panel with address, status, speed, battery level of the vehicle and **temperature detected**.

Useful to avoid "zoom" and "scroll" on the Fleet Map.

Provides the view:

- Map
- Satellite
- StreetView



**Dettaglio Posizione: DEMO3712**

**DEMO3712**

Targa TARGA3712

Data 25/01/2018 16.05.56

Indirizzo VIA MILANO 6

Località GORGONZOLA, MILANO

Stato QUADRO ON

---

Vel.

52 km/h

Batt.

13.5 V

Temp.1

1.8 °C

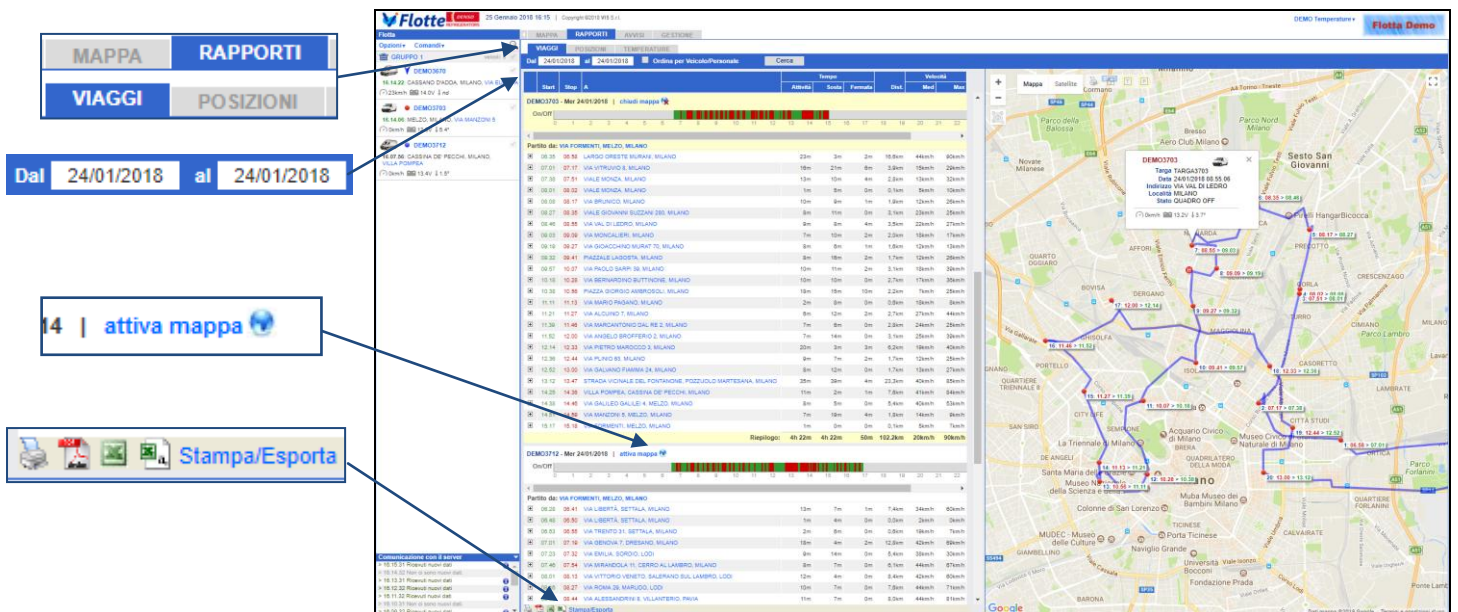
## Temperature Graphs

Interactive graphs of the temperatures detected by all selected vehicles (not one at a time!) In the set date range. Scrolling the graph with the "mouse", a popup displays time and temperature detected.



## Travels Report

List of Trips made by all selected vehicles (not one at a time!) in the date range set. Selecting the link "active map" the map appears with the layout of all journeys made on the day, with evidence of stops. Data printable and exportable in various format.



## Travels Report: travel vehicle summary

For each day that the vehicle has travelled displays graphics of Trip/Pause time and the list of trips made, with time departure, arrival, time travel, stop, km, average and maximum speeds.

Start	Stop	A	Tempo			Dist.	Velocità	
			Attività	Sosta	Fermata		Med	Max
DEMO3703 - Mer 24/01/2018   chiudi mappa								
On/Off								
Partito da: VIA FORMENTI, MELZO, MILANO								
06.35	06.58	LARGO ORESTE MURANI, MILANO	23m	3m	2m	16,6km	44km/h	90km/h
07.01	07.17	VIA VITRUVIO 8, MILANO	16m	21m	6m	3,9km	15km/h	29km/h
07.38	07.51	VIALE MONZA, MILANO	13m	10m	4m	2,8km	13km/h	32km/h
08.01	08.02	VIALE MONZA, MILANO	1m	5m	0m	0,1km	5km/h	10km/h
08.08	08.17	VIA BRUNICO, MILANO	10m	9m	1m	1,9km	12km/h	25km/h
08.27	08.35	VIALE GIOVANNI SUZZANI 280, MILANO	8m	11m	0m	3,1km	23km/h	25km/h
08.46	08.55	VIA VAL DI LEDRO, MILANO	9m	8m	4m	3,5km	22km/h	27km/h
09.03	09.09	VIA MONCALIERI, MILANO	7m	10m	2m	2,0km	18km/h	17km/h
09.19	09.27	VIA GIOACCHINO MURAT 70, MILANO	8m	6m	1m	1,6km	12km/h	13km/h
09.32	09.41	PIAZZALE LAGOSTA, MILANO	8m	16m	2m	1,7km	12km/h	26km/h
09.57	10.07	VIA PAOLO SARPI 39, MILANO	10m	11m	2m	3,1km	18km/h	39km/h
10.18	10.28	VIA BERNARDINO BUTTINONE, MILANO	10m	10m	0m	2,7km	17km/h	36km/h
10.38	10.56	PIAZZA GIORGIO AMBROSOLI, MILANO	18m	15m	10m	2,2km	7km/h	25km/h

## Travels Report: Trip details with map

Selecting the "+" on the left of a trip, a Trip Detail is displayed:

Shows all positions sent by the device during the entire trip, with indication of direction, speed and cumulated distance.

Partito da: STRADA ALLA			
+	06.55	07.29	VIA
+	07.32	07.34	VIA
+	09.48	09.50	VIA

