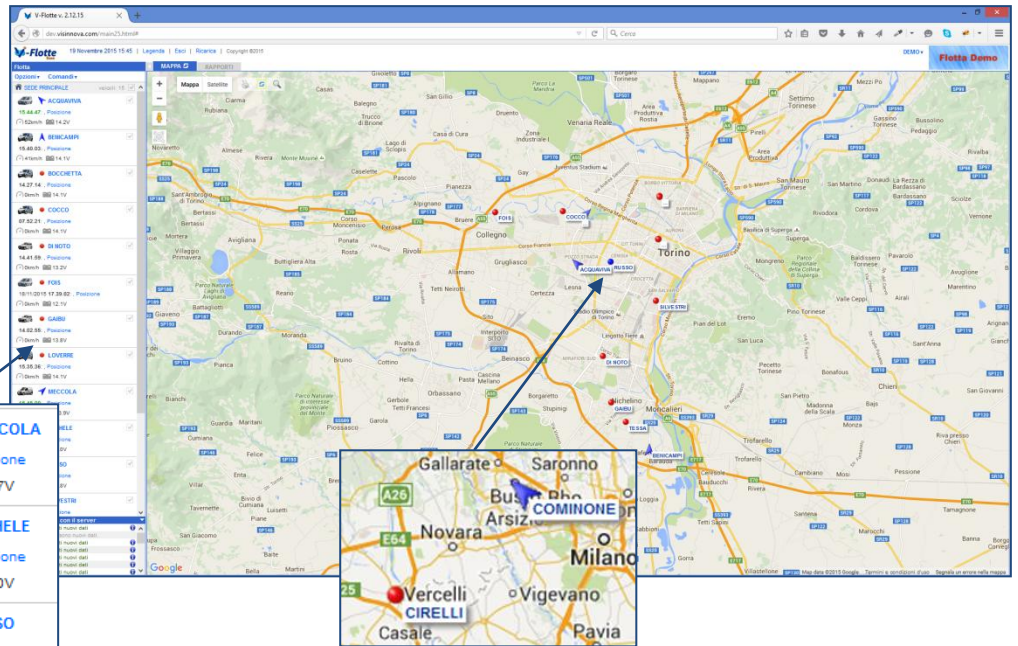


Summary feature vFlotte XS

Map Fleet

Simultaneously displays the current location of all vehicles selected. The icon shows the status of the vehicle and each vehicle is recognizable by the label with the name (customizable).



Legenda

Indicatori stato veicolo:

- Quadro off
- Quadro on - fermo
- Quadro on - marcia
- Quadro on - fermo - GPRS assente.
- Quadro on - marcia - GPRS assente.
- ✖ Blocco avviamento attivo
- Quadro off - GPRS assente
- Quadro on - GPRS assente

Image with exact Model and Vehicle Color

MECCOLA
15.17.34 : Posizione
0km/h 13.7V

MICHELE
14.28.40 : Posizione
0km/h 14.0V

RUSSO
15.12.32 : Posizione
0km/h 13.9V

Map Detail Position

Just clicking on "position" link, or directly on the icon on the map of the vehicle fleet, a PopUp window appears with the detail map and instrument panel with status, speed and battery level of the vehicle.

Useful to avoid "zoom" and "scroll" on the Fleet map.

GAIBU

Targa EF334AL
Data 19/11/2015 14.02.55
Stato QUADRO OFF

Vel. 0 km/h
Batt. 13.8 V

Salva la posizione come Punto Di Interesse

Positions report

Setting day, start time, minutes and hours interval, appear, for all selected vehicles (not one at time!), The positions sent by the devices in the selected period, with indication of time, distance, direction, speed and message type (Ignition On / off, moving, stationary, etc.).

The map is activated with all positions for the selected vehicle.

Data printable and exportable

MAPPA RAPPORTI
VIAGGI POSIZIONI

Veicolo	n° Posizioni	Dalle	Alle	km	Mappe
ACQUAVIVA	5	15.05	15.34	3.5	vedi
BEHCAMP	7	15.05	15.36	1.1	vedi
LOVERRE	20	15.06	15.36	9.7	chiedi

Localization by Smartphone